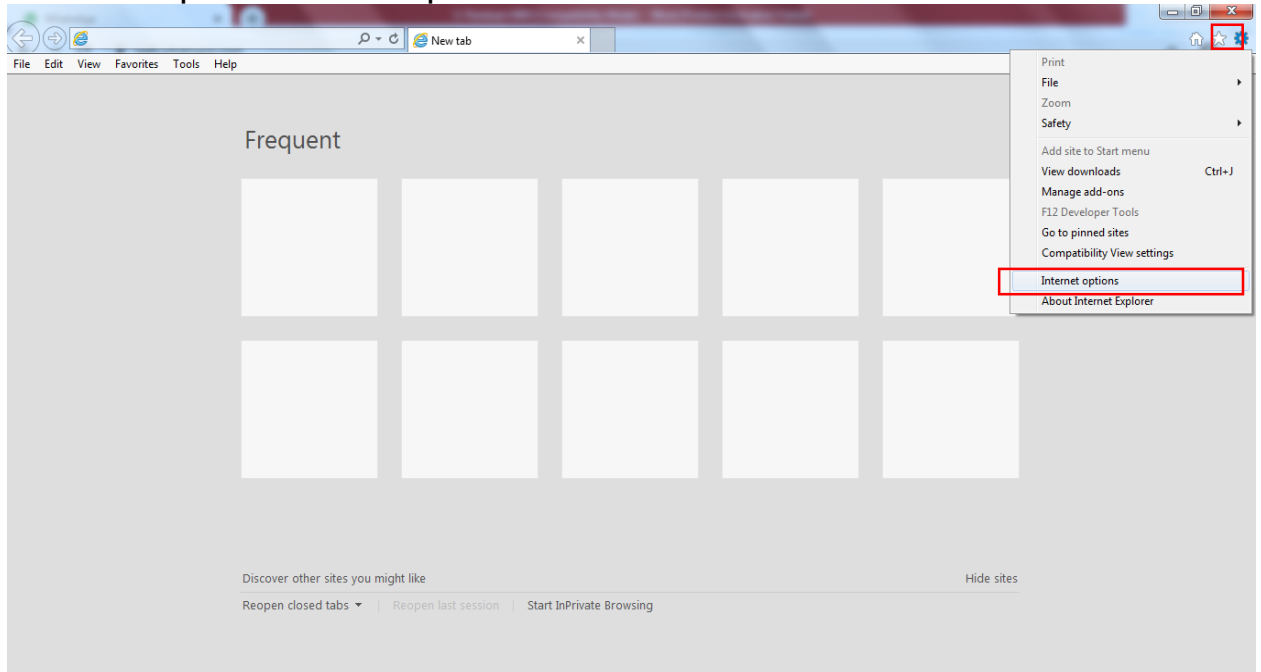


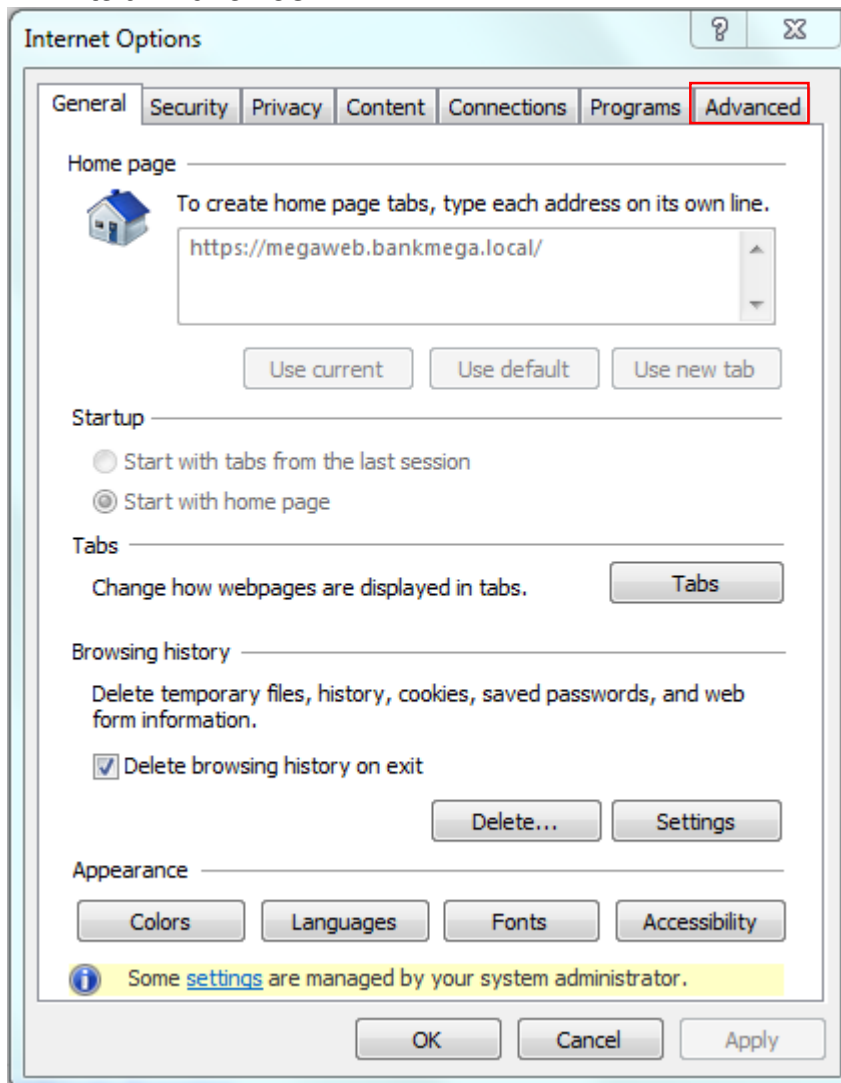
## Panduan Konfigurasi Transport Layer Security (TLS)

### A. Konfigurasi Transport Layer Security (TLS) pada Internet Explorer:

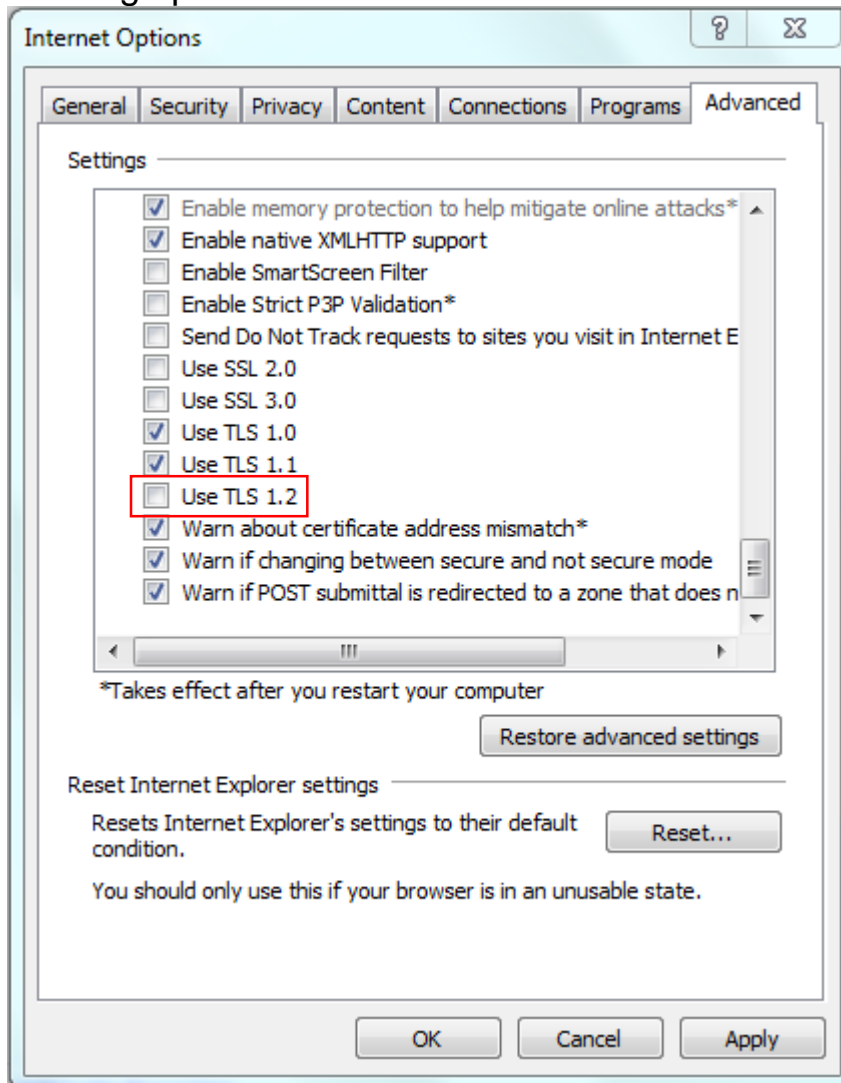
1. Buka Internet Explorer
2. Klik tombol setting di pojok kanan atas atau tekan tombol Ctrl+T, kemudian pilih “Internet options”



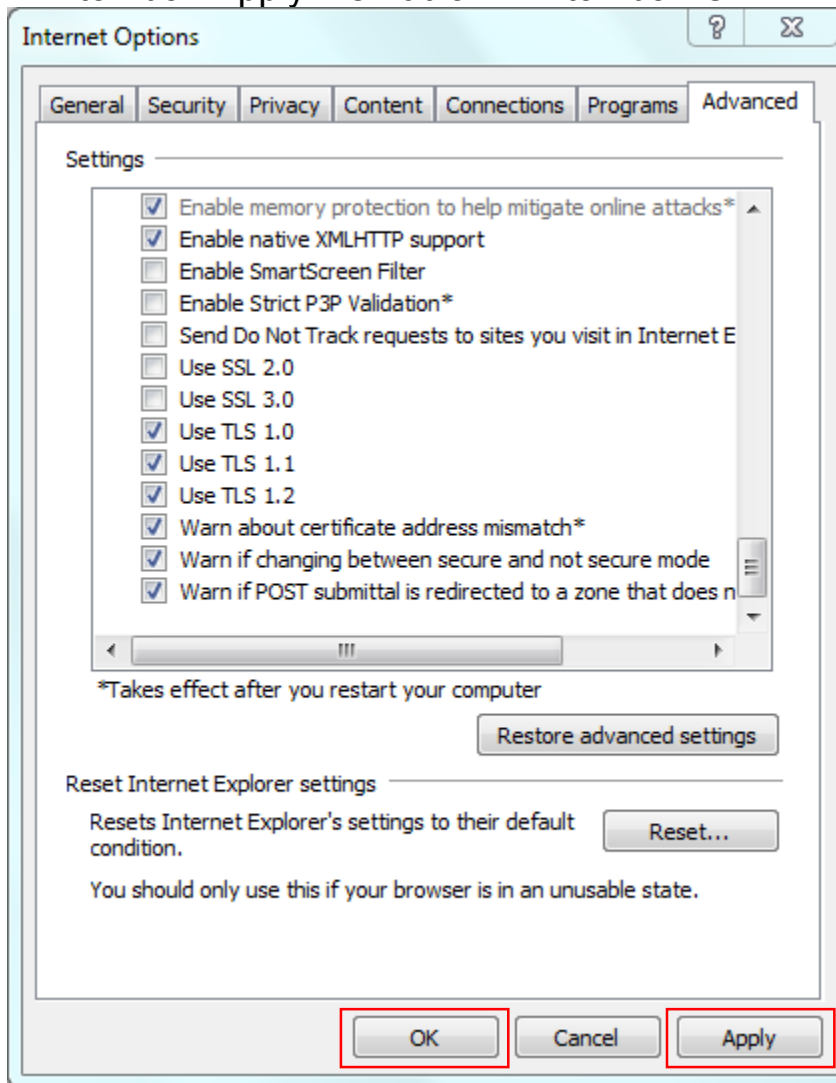
### 3. Pilih tab “Advance”



4. Scroll ke bawah hingga menemukan "Use TLS 1.2" kemudian di centang apabila belum.



5. Klik tombol “Apply” kemudian klik tombol “Ok”

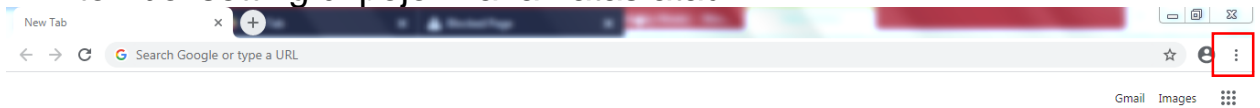


6. Tutup semua tab dan tutup Internet Explorer
7. Kembali ke halaman [www.bankmega.com](http://www.bankmega.com)

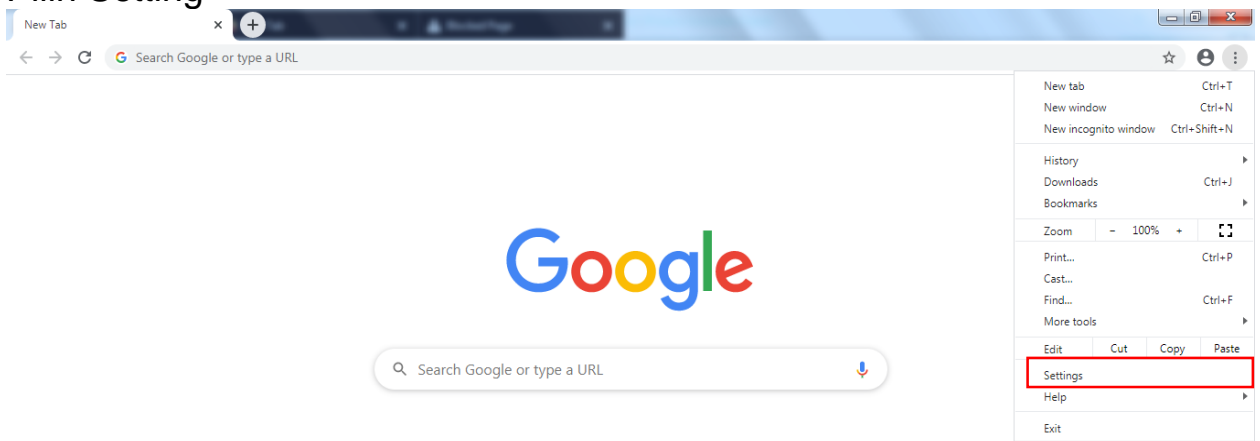
## B. Konfigurasi Transport Layer Security (TLS) pada Google Chrome:

1. Buka Google Chrome

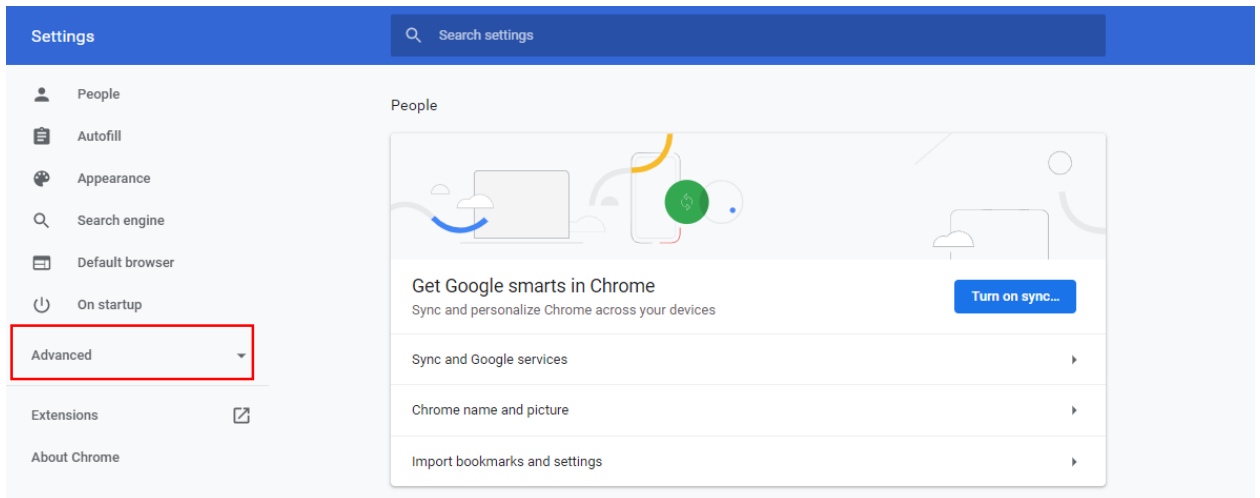
## 2. Klik tombol setting di pojok kanan atas atau ALT+F



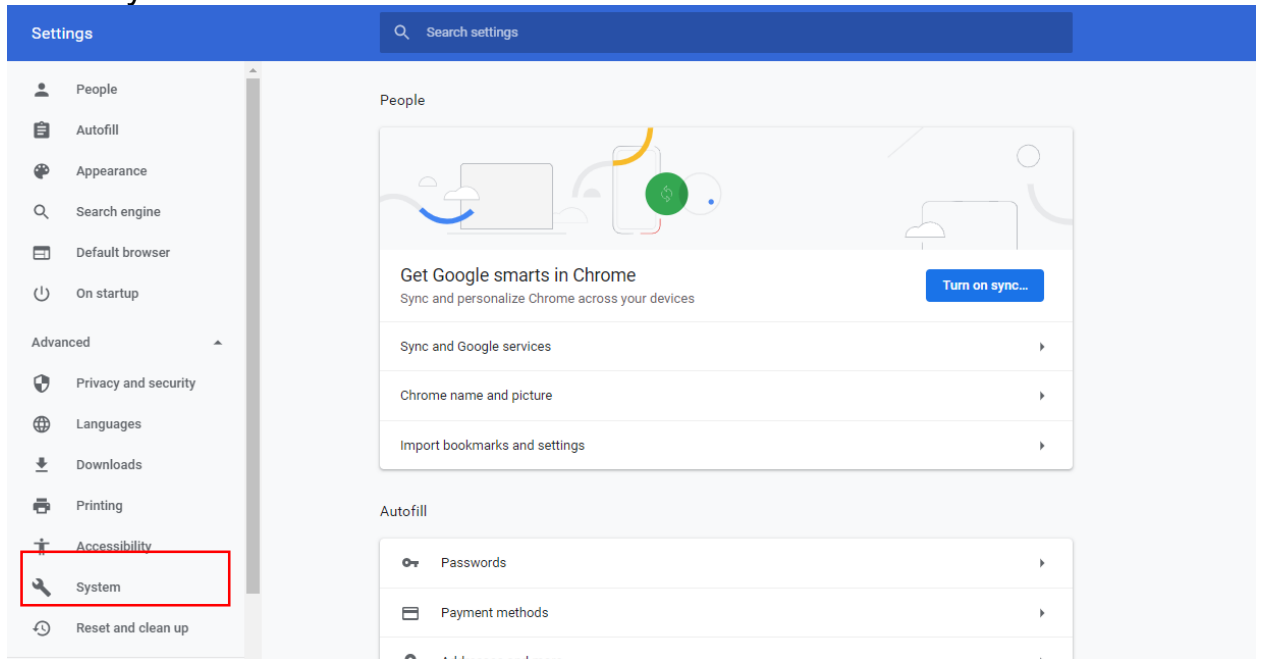
## 3. Pilih Setting



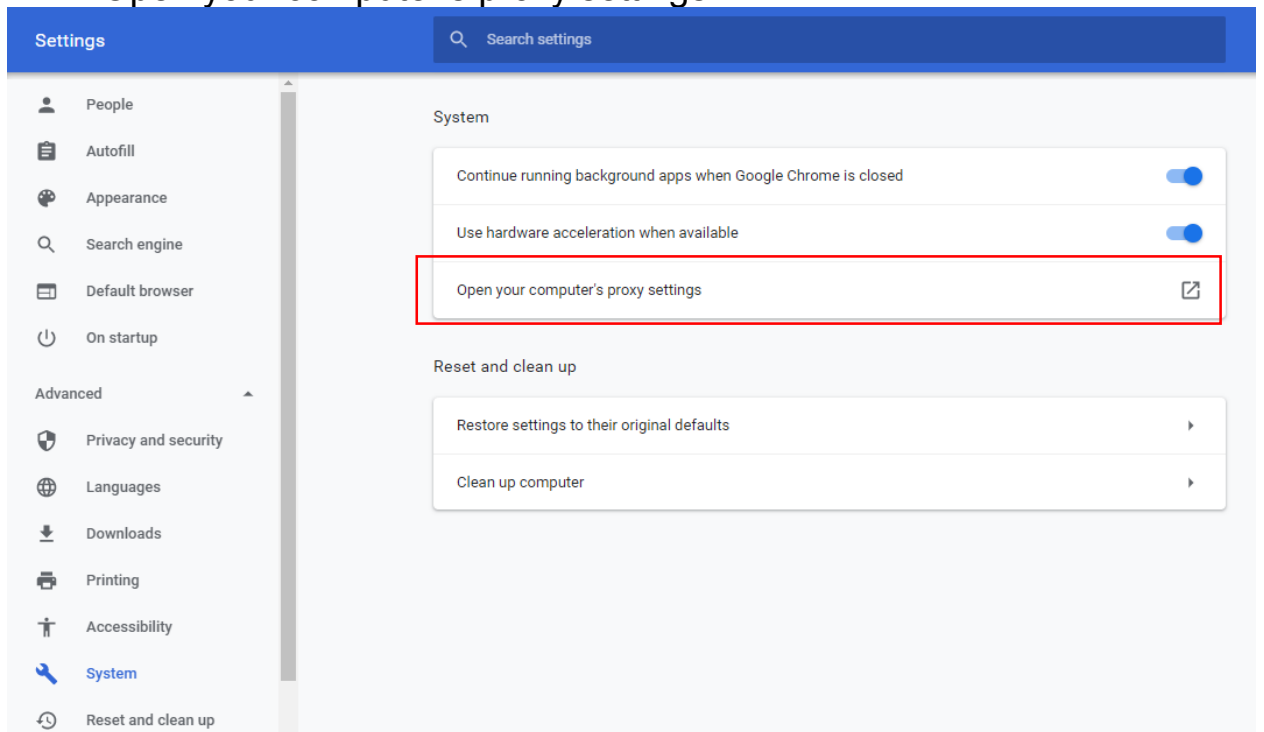
## 4. Pilih "Advance"



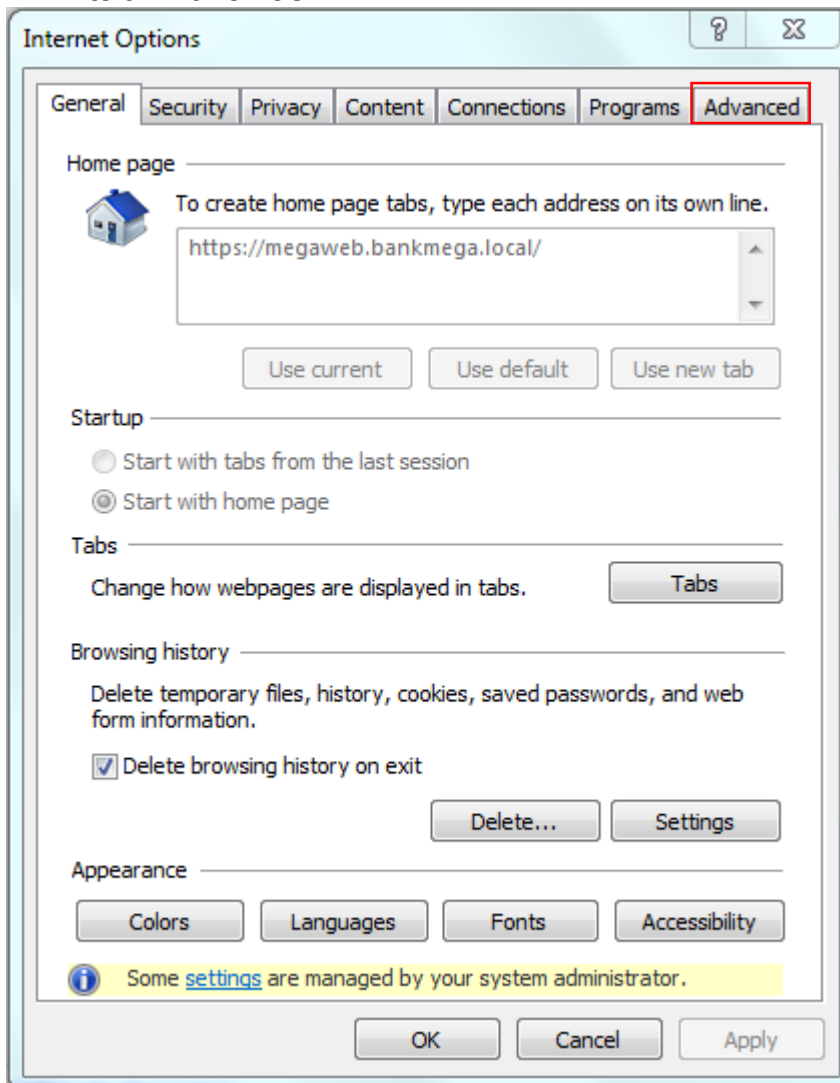
## 5. Pilih “System”



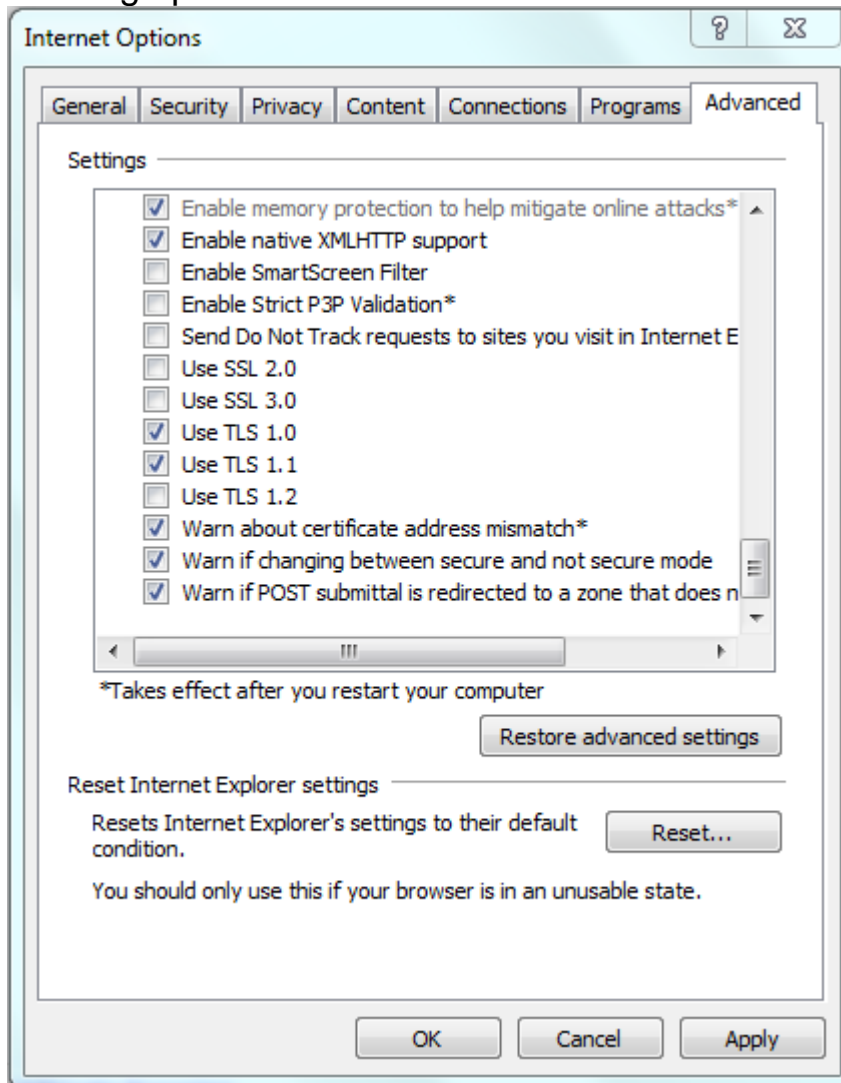
## 6. Pilih “Open your computer’s proxy settings”



## 7. Pilih tab “Advance”

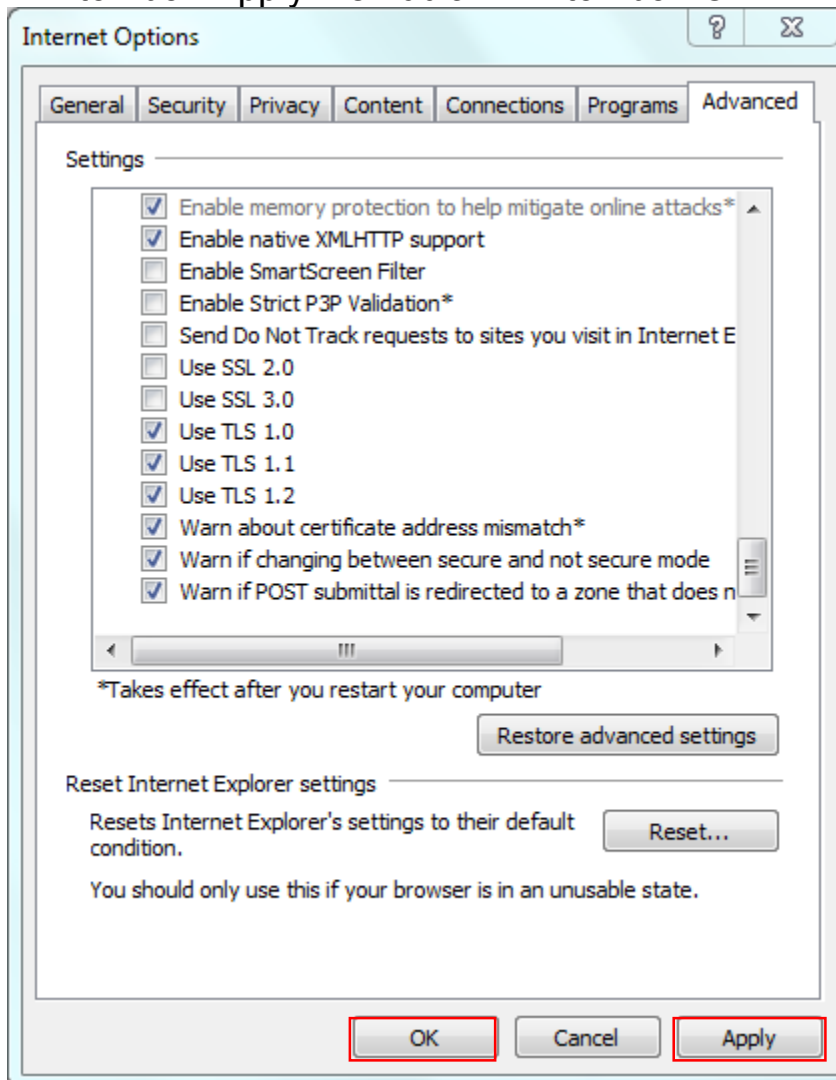


8. Scroll ke bawah hingga menemukan “Use TLS 1.2” kemudian di centang apabila belum.





9. Klik tombol “Apply” kemudian klik tombol “Ok”

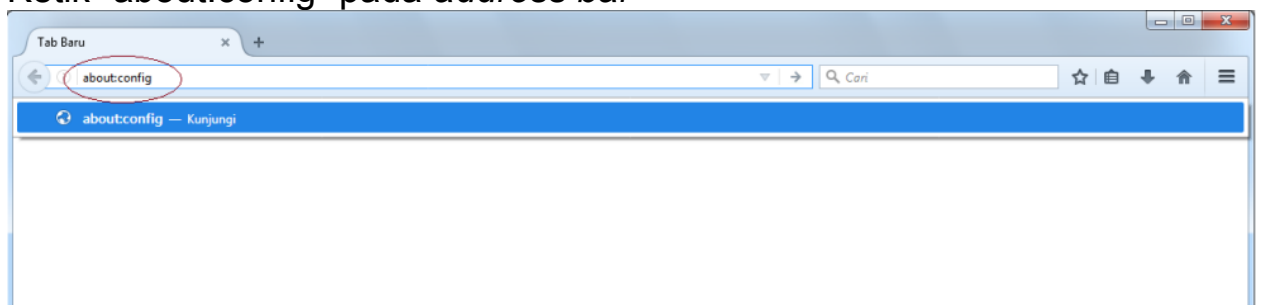


10. Tutup semua tab dan tutup Google Chrome

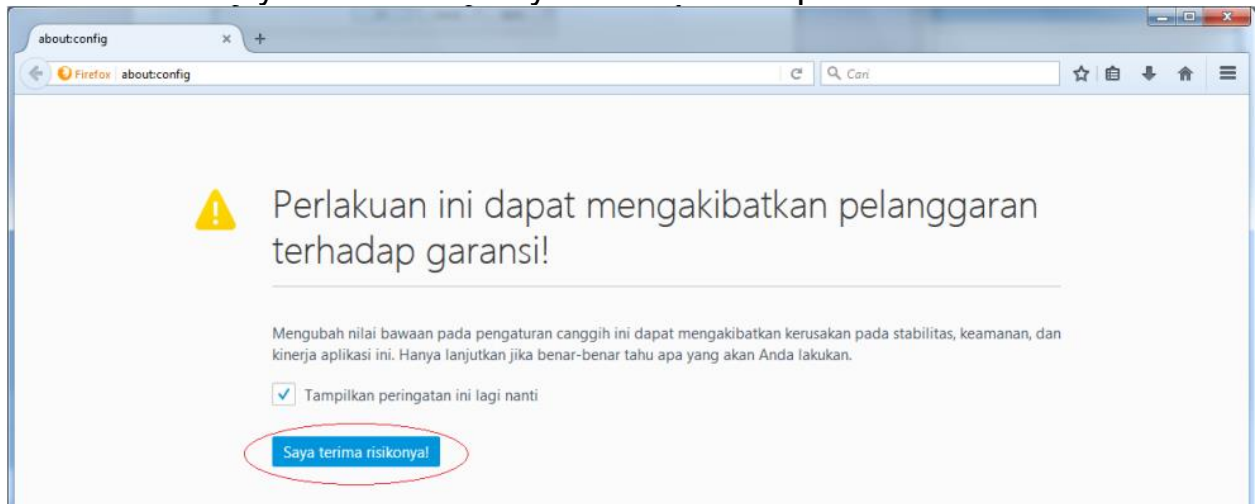
11. Kembali ke halaman [www.bankmega.com](http://www.bankmega.com)

C. Konfigurasi Transport Layer Security (TLS) pada Firefox:

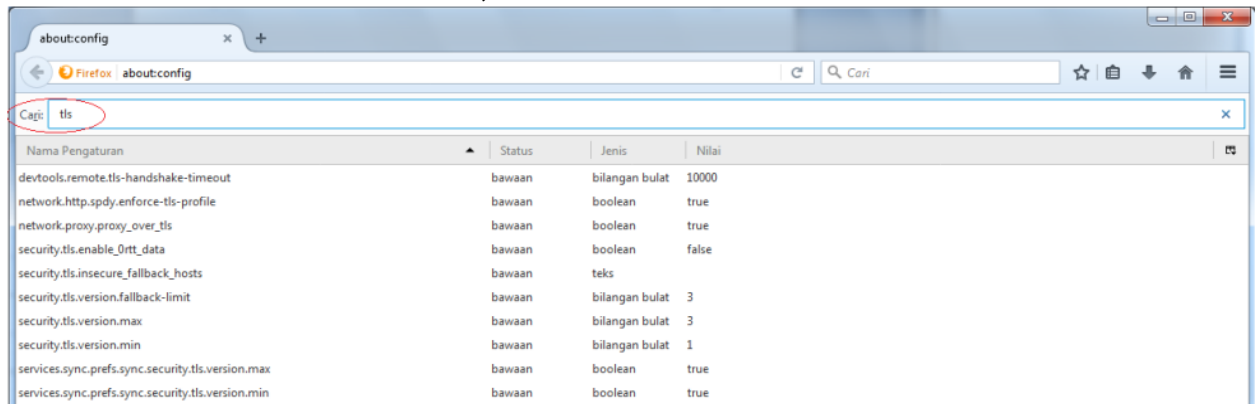
1. Buka Firefox
2. Ketik “about:config” pada *address bar*



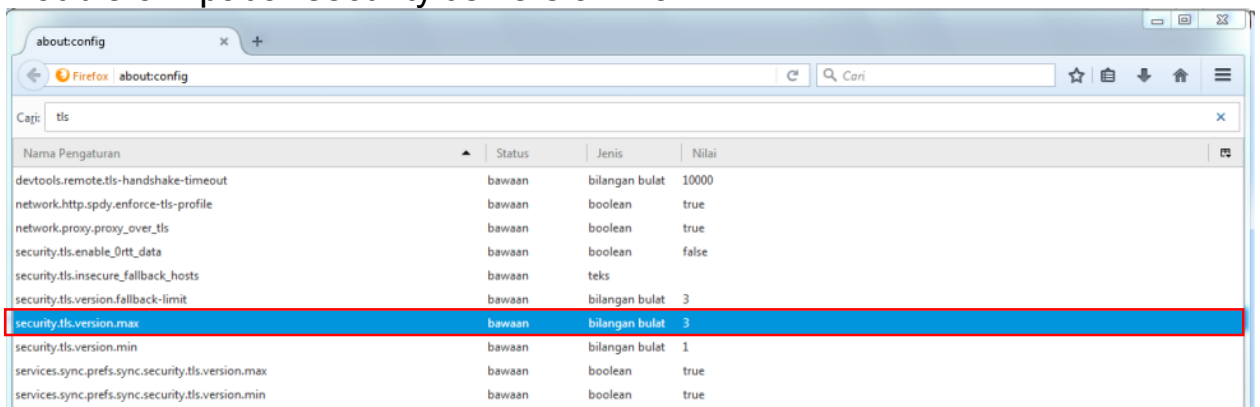
3. Klik tombol “Saya terima risikonya!” atau “I accept the risk!”



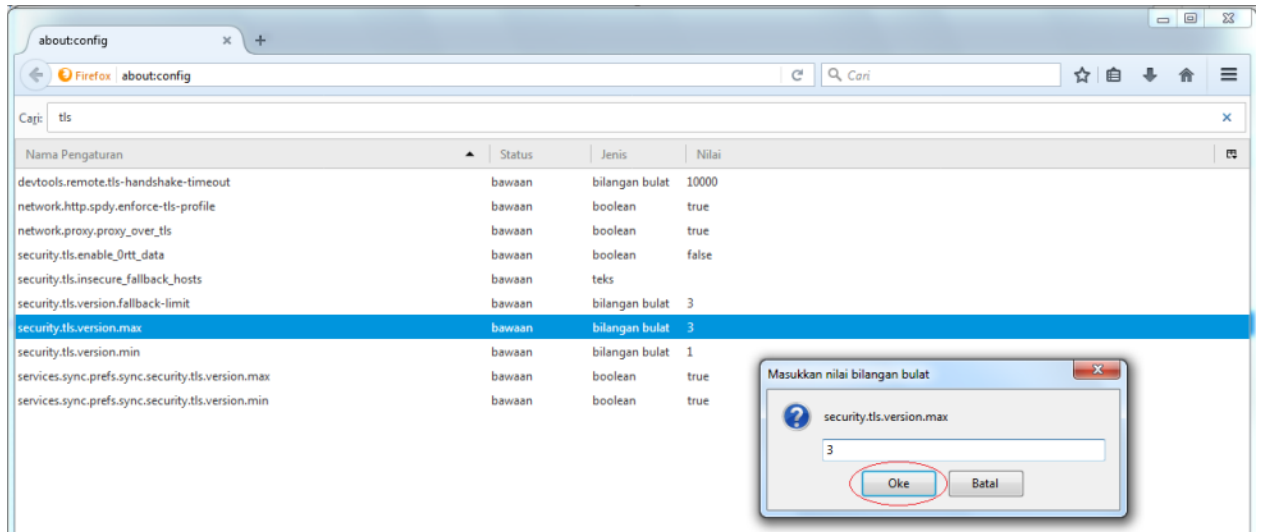
4. Pada kolom search atau cari, ketik tls



5. Double klik pada “security.tls.version.max”



6. Ketik 3 pada kotak box. Kemudian klik “Oke”.



12. Tutup semua tab dan tutup Firefox

13. Kembali ke halaman [www.bankmega.com](http://www.bankmega.com)